

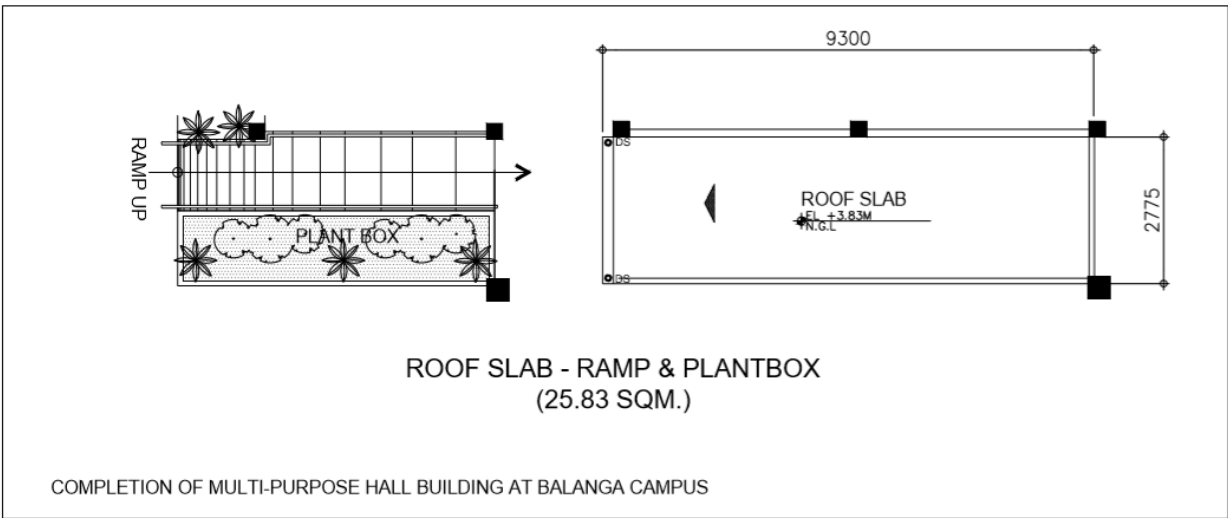


BATAAN PENINSULA STATE UNIVERSITY
City of Balanga 2100 Bataan
Philippines
PHYSICAL PLANT AND ENGINEERING SERVICES

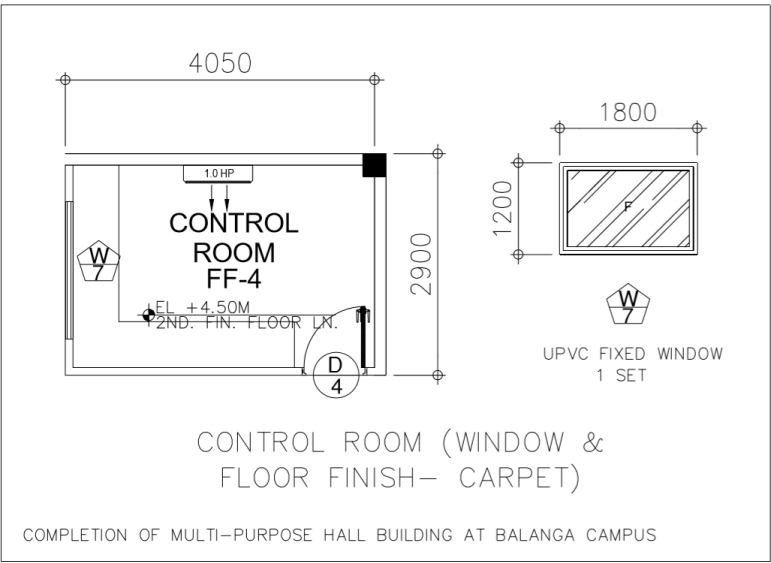
CLARIFICATION FOR Completion of Multi-Purpose Hall Building at Balanga Campus

1. ARCHITECTURAL PLANS:

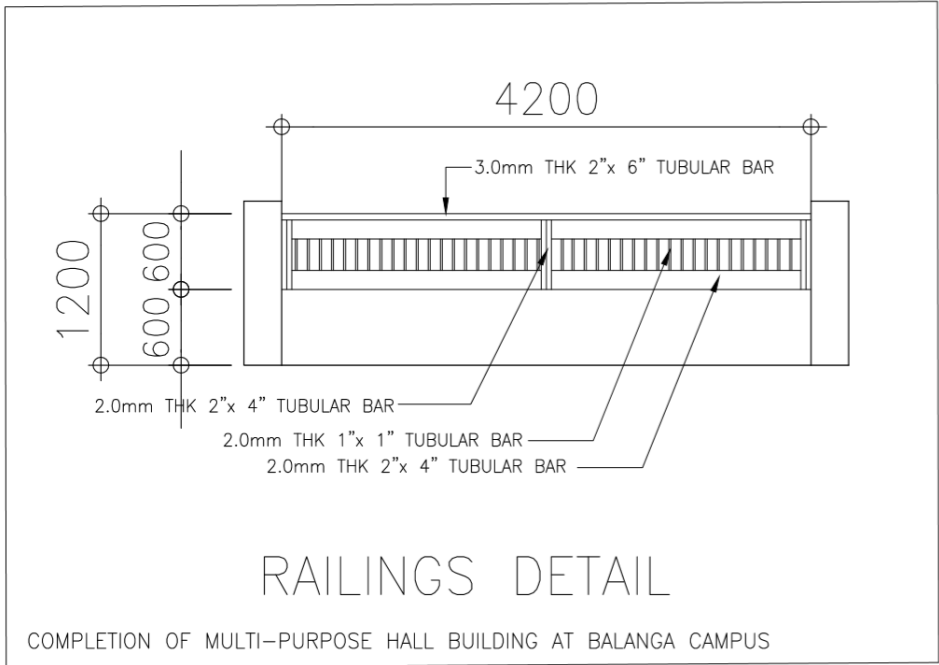
- a. Ground Floor Roof Slab coverage
 - From 13.52 sq.m to 25.83 sq.m



- b. Control Room
 - Change Floor schedule FROM FF-2 to FF-4
 - Specification of Window

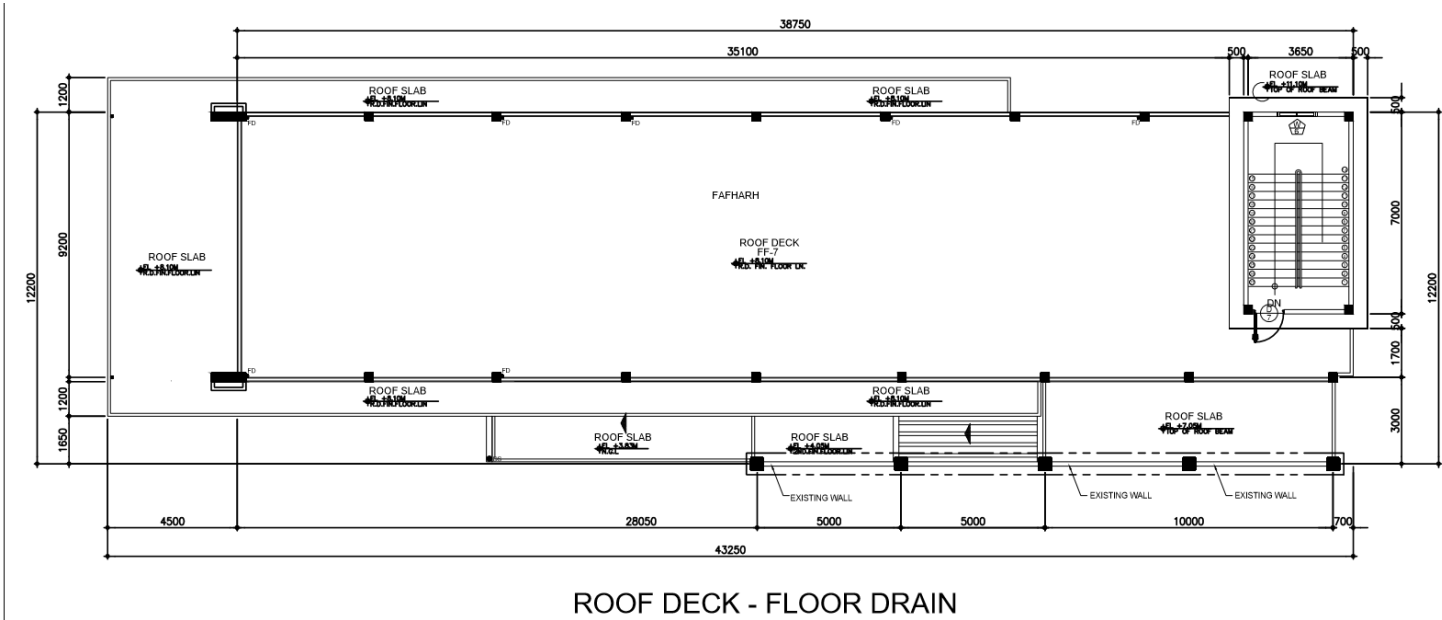


c. New Railing Details



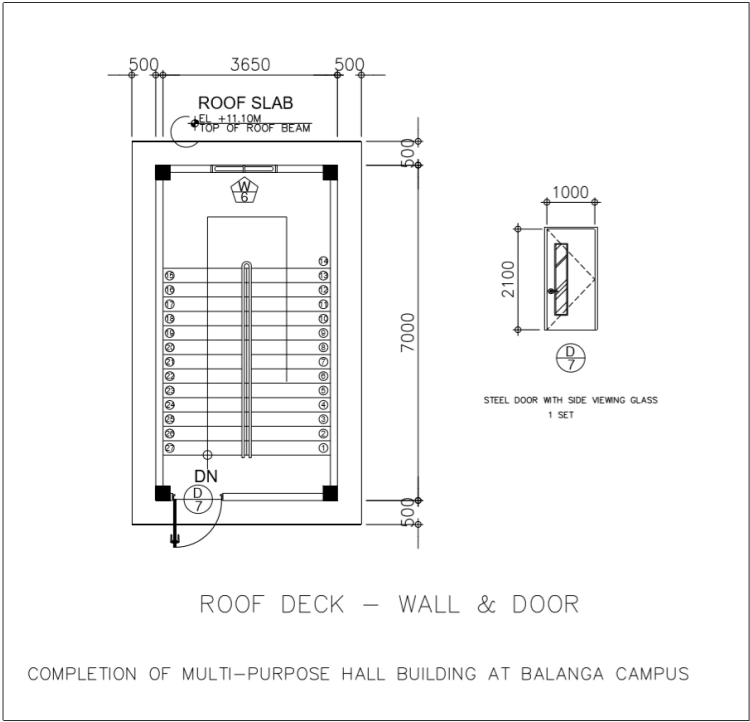
d. Roof Deck

- New Floor Drain Layout
- Change of Floor Finish from FF-1 to FF-7 (Smooth cement finished with waterproofing)



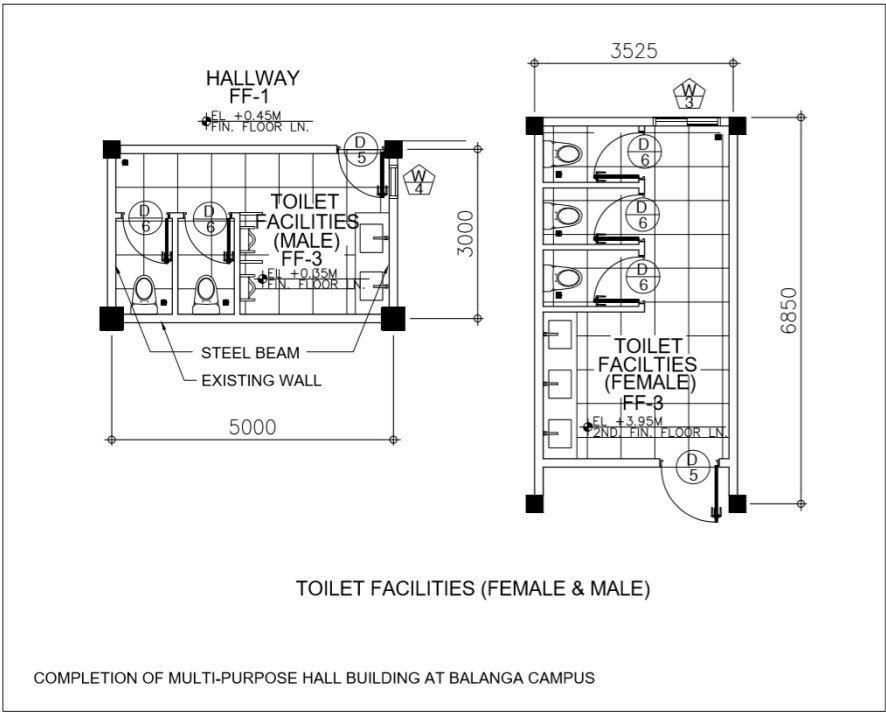
COMPLETION OF MULTI-PURPOSE HALL BUILDING AT BALANGA CAMPUS

e. Roof Deck Stair Access – Additional Door and Wall



f. Elevation of Toilet Facilities at:

- Ground Floor: +0.35m
- Second Floor: +3.95m



g. Exclude in the scope of work the supply and installation of Amphitheater Chairs.

Prepared by:

Ar. Roxette S.Umerez,uap

Architect 1
BPSU, TWG for Infrastructure

Ar. Jo-ana Mari Z. Tanega, uap

Architect 1
BPSU, PPES

Noted by:

Dr. Alfredo D. Valentos, PME

PPES Director